

♩ = 120

Measures 1-6: Treble clef, key of D major (F#), 4/4 time. Bass clef, key of D major (F#), 4/4 time. The tempo is marked as quarter note = 120. The melody in the treble consists of eighth-note patterns. The bass line features a steady eighth-note accompaniment with occasional chords.

7

Measures 7-8: Treble clef, key of D major (F#), 4/4 time. Bass clef, key of D major (F#), 4/4 time. Measure 7 shows a melodic line in the treble and a single note in the bass. Measure 8 shows a melodic line in the treble and a single note in the bass.

8

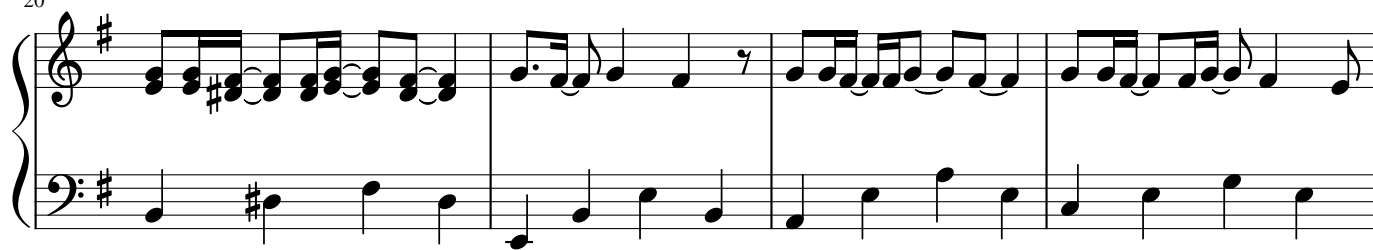
Measures 9-11: Treble clef, key of D major (F#), 4/4 time. Bass clef, key of D major (F#), 4/4 time. Measures 9-11 show a melodic line in the treble and a steady eighth-note accompaniment in the bass.

12

Measures 12-15: Treble clef, key of D major (F#), 4/4 time. Bass clef, key of D major (F#), 4/4 time. Measures 12-15 show a melodic line in the treble and a steady eighth-note accompaniment in the bass.

16

Measures 16-19: Treble clef, key of D major (F#), 4/4 time. Bass clef, key of D major (F#), 4/4 time. Measures 16-19 show a melodic line in the treble and a steady eighth-note accompaniment in the bass.



24

Measures 24-29. Treble clef: Measure 24 has a whole rest. Measures 25-28 feature eighth-note patterns. Measure 29 has a whole rest. Bass clef: Measures 24-25 have a whole rest. Measures 26-28 feature quarter and eighth notes. Measure 29 has a whole rest.

30

Measures 30-34. Treble clef: Measures 30-32 feature eighth-note patterns. Measure 33 has a quarter rest. Measure 34 has a quarter note. Bass clef: Measures 30-32 feature quarter and eighth notes. Measure 33 has a quarter rest. Measure 34 has a quarter note.

35

Measures 35-36. Treble clef: Measure 35 has a quarter rest. Measure 36 has a quarter note. Bass clef: Measures 35-36 feature quarter notes.

36

Measures 37-40. Treble clef: Measures 37-38 feature eighth-note patterns. Measure 39 has a quarter rest. Measure 40 has a quarter note. Bass clef: Measures 37-38 feature quarter and eighth notes. Measure 39 has a quarter rest. Measure 40 has a quarter note.

41

Measures 41-46. Treble clef: Measures 41-42 feature eighth-note patterns. Measure 43 has a quarter rest. Measure 44 has a quarter note. Measure 45 has a quarter rest. Measure 46 has a quarter note. Bass clef: Measures 41-42 feature quarter and eighth notes. Measure 43 has a quarter rest. Measure 44 has a quarter note. Measure 45 has a quarter rest. Measure 46 has a quarter note.

47

Measures 47-51. Treble clef: Measures 47-48 feature eighth-note patterns. Measure 49 has a quarter rest. Measure 50 has a quarter note. Measure 51 has a quarter note. Bass clef: Measures 47-48 feature quarter and eighth notes. Measure 49 has a quarter rest. Measure 50 has a quarter note. Measure 51 has a quarter note.

52

A musical score for measures 52, 53, and 54. The music is written for a grand piano with a treble and bass staff. The key signature has one sharp (F#). The time signature is not explicitly shown but appears to be 4/4 based on the note values. Measure 52 features a treble staff with a sequence of eighth and sixteenth notes, and a bass staff with a whole note chord (F# and C#). Measure 53 continues the treble staff melody with more sixteenth notes and a dotted quarter note, while the bass staff has a half note. Measure 54 shows further sixteenth-note activity in the treble and a half note in the bass.

55

Measures 55-58. Treble clef: Rapid sixteenth-note runs. Bass clef: Simple accompaniment.

59

Measures 59-64. Treble clef: Sixteenth-note runs and rests. Bass clef: Steady accompaniment.

65

Measures 65-70. Treble clef: Eighth-note patterns. Bass clef: Steady accompaniment with occasional chords.

71

Measures 71-72. Treble clef: Single melodic line. Bass clef: Simple accompaniment.

72

Measures 72-73. Treble clef: Melodic line with a slur. Bass clef: Simple accompaniment with a slur.