

Dire Straits - Walk of Life


Intro

9

A musical score for the song 'The Rose Tree'. The score is written for a piano, with a treble and bass staff. The key signature is three sharps (F#, C#, G#), and the time signature is 3/4. The melody is in the treble staff, and the bass staff provides a simple harmonic accompaniment. The score consists of five measures, each containing a single musical phrase. The first measure starts with a double bar line and a repeat sign. The melody begins with a quarter note G#4, followed by a quarter note A#4, and a quarter rest. The second measure begins with a quarter rest, followed by a quarter note B4, a quarter note C5, a quarter note D5, and a quarter note E5. The third measure begins with a quarter note D5, followed by a quarter note C5, and a quarter rest. The fourth measure begins with a quarter rest, followed by a quarter note B4, a quarter note A#4, and a quarter note G#4. The fifth measure begins with a quarter note G#4, followed by a quarter note F#4, and a quarter rest. The bass staff accompaniment consists of a single note in each measure: G#2 in the first, B2 in the second, D3 in the third, B2 in the fourth, and G#2 in the fifth.

Main riff

Main riff



14

A musical score for the song 'The Rose Tree'. It features a treble and bass staff. The treble staff has a key signature of three sharps (F#, C#, G#) and a 2/4 time signature. The melody is written in a simple, folk-like style. The bass staff is mostly empty, with a few notes in the first measure. The score is divided into four measures by vertical bar lines.

A musical score for the song "The Rose Tree". It features a piano introduction in 3/4 time, marked "Moderato". The score is written for voice and piano. The piano part consists of a right hand and a left hand. The right hand plays a melody in the treble clef, and the left hand plays a bass line in the bass clef. The key signature has three sharps (F#, C#, G#). The tempo is marked "Moderato". The score includes a piano introduction and a vocal melody. The piano introduction is in 3/4 time and consists of four measures. The vocal melody is in 3/4 time and consists of four measures. The piano part is in 3/4 time and consists of four measures. The key signature has three sharps (F#, C#, G#). The tempo is marked "Moderato".

18

Measures 18-22. The top system shows a treble staff with a melody in G major and a bass staff with whole rests. The bottom system shows a treble staff with chords and a bass staff with whole rests. Measures 18-22 are shown.

23

Measures 23-27. The top system shows a treble staff with a melody in G major and a bass staff with whole rests. The bottom system shows a treble staff with chords and a bass staff with whole rests. Measures 23-27 are shown. The word "Chorus" is written above the treble staff in measure 24.

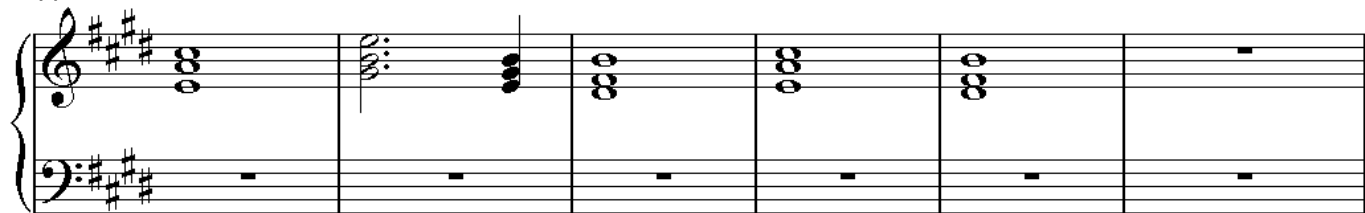
30

Measures 30-37. The top system shows a treble staff with a melody in G major and a bass staff with whole rests. The bottom system shows a treble staff with chords and a bass staff with whole rests. Measures 30-37 are shown.

38

Measures 38-42. The top system shows a treble staff with a melody in G major and a bass staff with whole rests. The bottom system shows a treble staff with chords and a bass staff with whole rests. Measures 38-42 are shown.

44



Order of playing:

Intro, Main riff,
Chorus, Main riff
Chorus, Main riff
Chorus, Main riff till end.