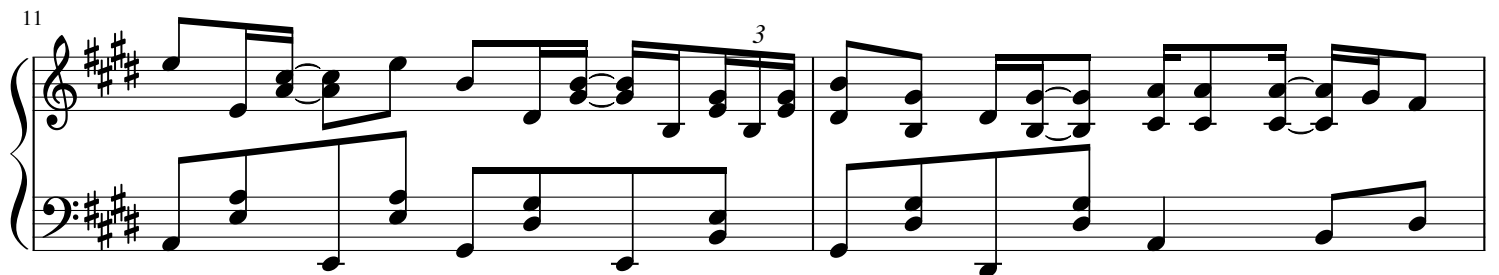
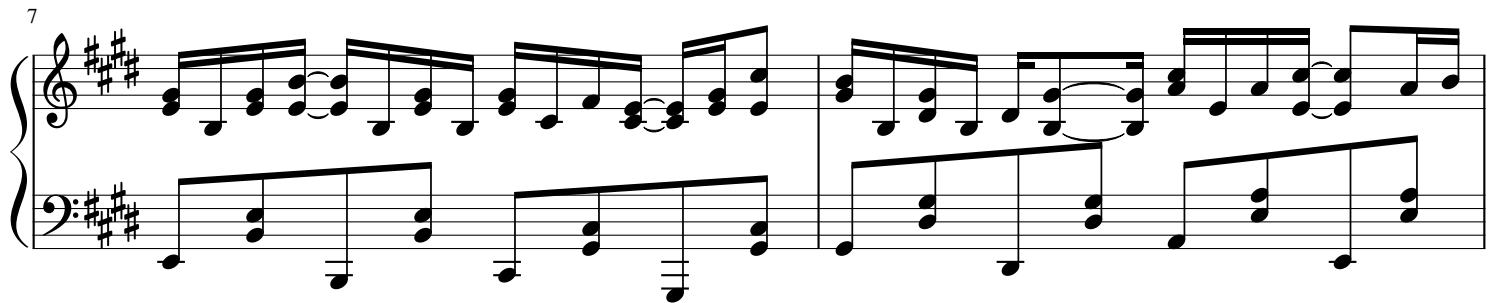
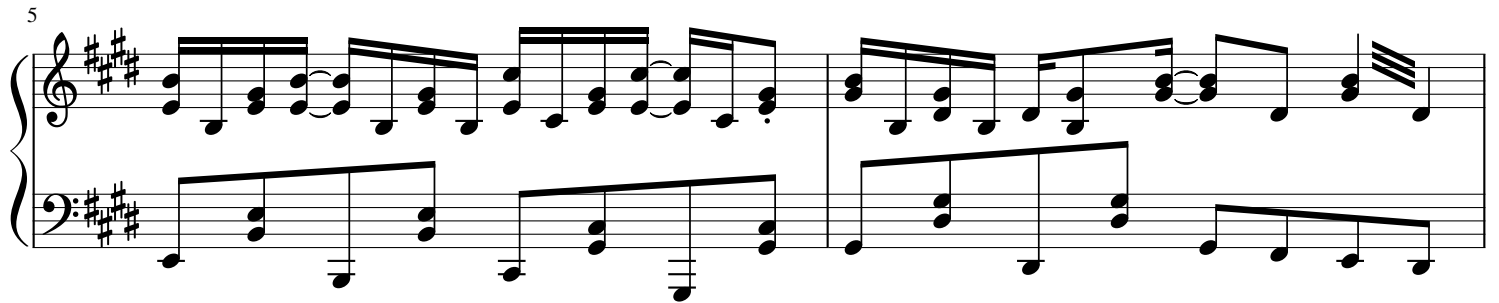
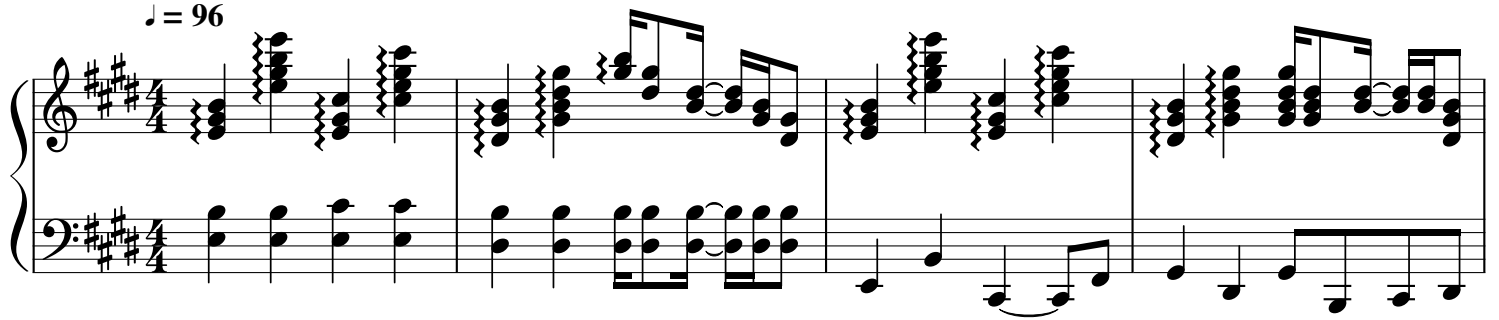


Lake Shore Drive

Skip Haynes

$\text{♩} = 96$



13

Measures 13 and 14 of a musical score in A major (three sharps). The piece is in 4/4 time. Measure 13 features a treble staff with eighth-note chords and a bass staff with a steady eighth-note accompaniment. Measure 14 continues with similar textures, including some tied notes and a melodic line in the treble.

15

Measures 15, 16, and 17. Measure 15 has a treble staff with eighth-note chords and a bass staff with eighth notes. Measure 16 shows a change in the bass staff to a more active eighth-note pattern. Measure 17 introduces a 2/4 time signature change, with the treble staff playing chords and the bass staff playing eighth notes.

18

Measures 18, 19, and 20. Measure 18 features a treble staff with eighth-note chords and a bass staff with eighth notes. Measure 19 continues with similar textures. Measure 20 shows a treble staff with eighth-note chords and a bass staff with eighth notes, including a grace note in the second measure.

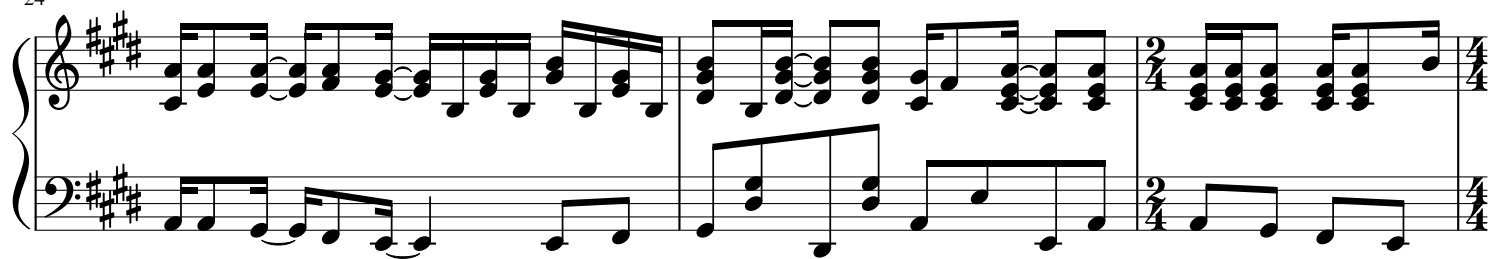
20

Measures 21 and 22. Measure 21 has a treble staff with eighth-note chords and a bass staff with eighth notes. Measure 22 shows a treble staff with eighth-note chords and a bass staff with eighth notes, including a grace note in the second measure.

22

Measures 23 and 24. Measure 23 features a treble staff with eighth-note chords and a bass staff with eighth notes. Measure 24 continues with similar textures, including a grace note in the second measure.

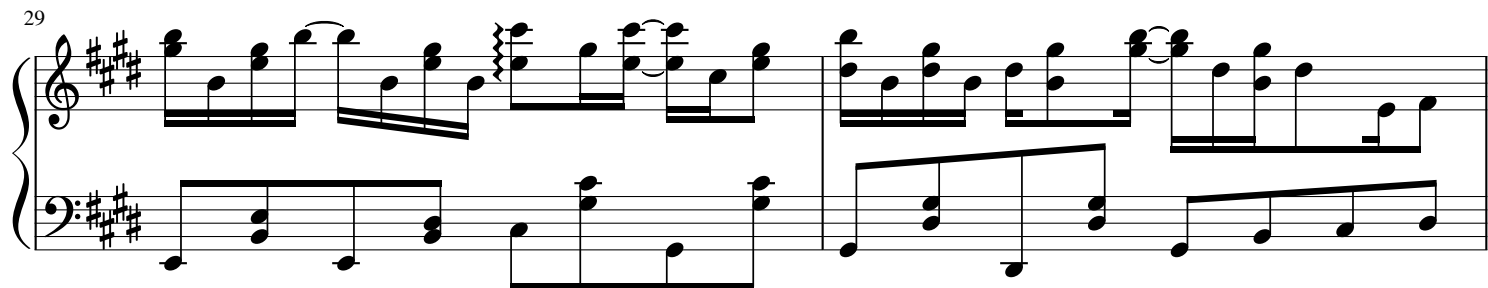
24



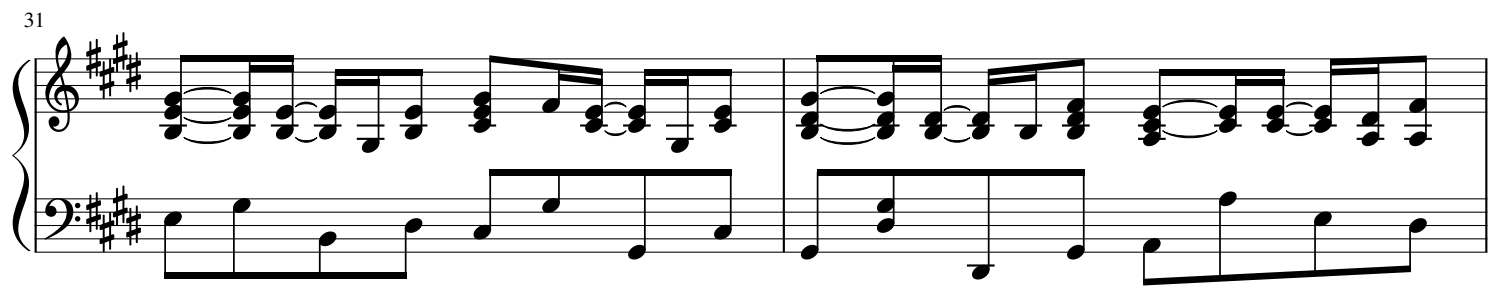
27



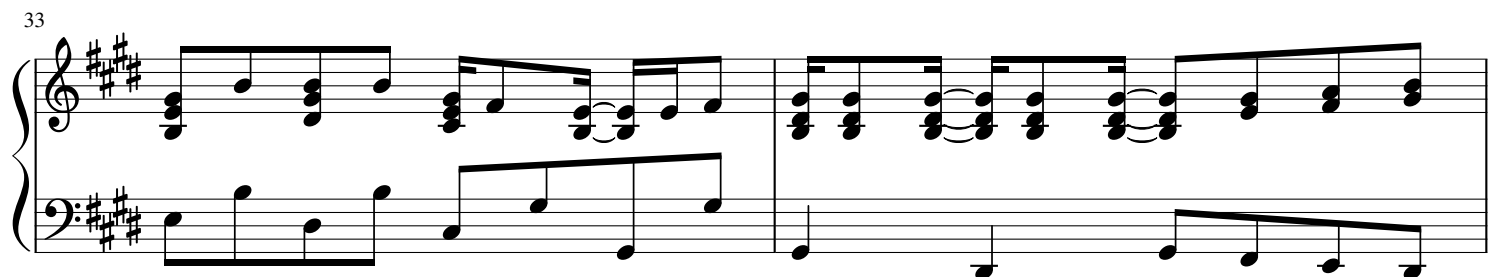
29



31



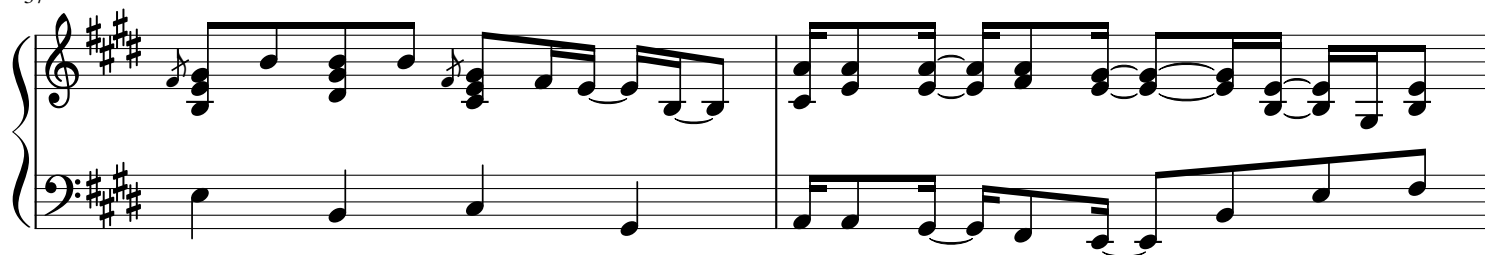
33



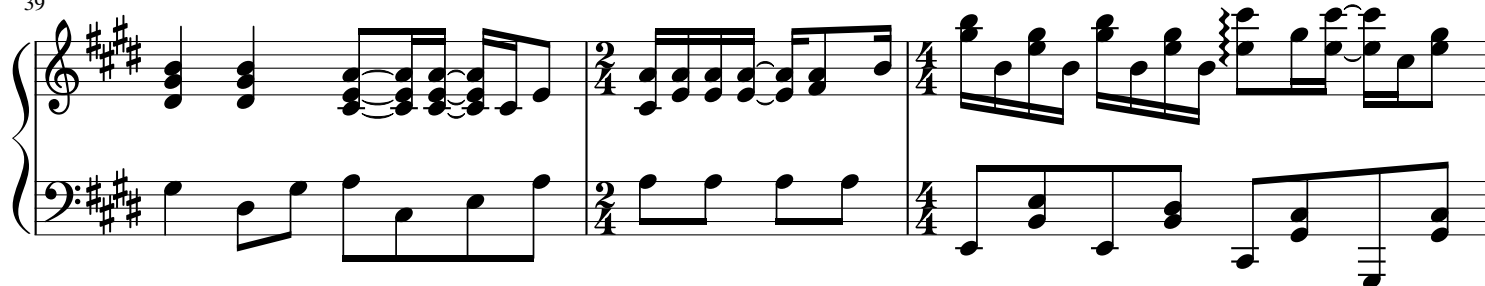
35



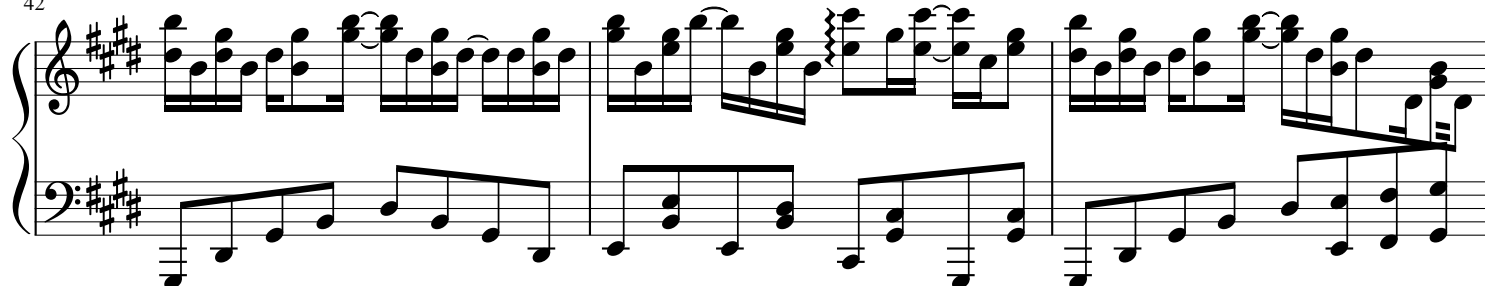
37



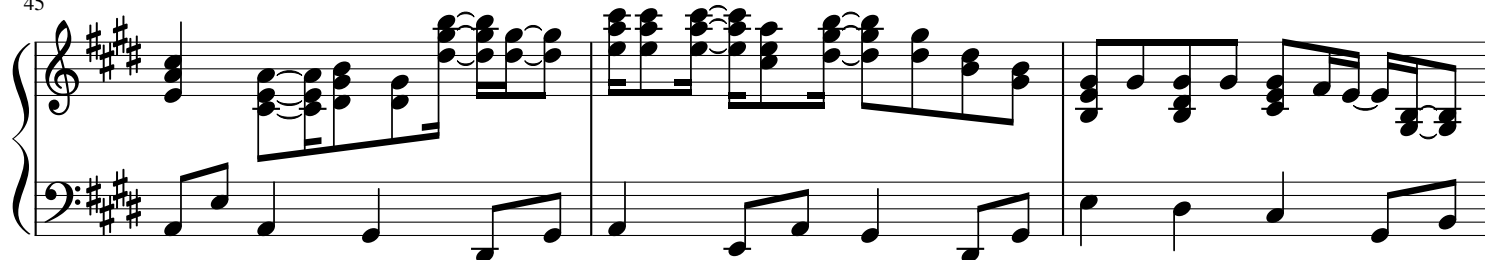
39



42



45



48

Measures 48-50 of a musical score in A major (three sharps). The piece is in 4/4 time. Measure 48 features a treble staff with eighth-note chords and a bass staff with a steady eighth-note accompaniment. Measure 49 continues this pattern. Measure 50 shows a change in the treble staff to a more complex chordal texture, while the bass staff continues its accompaniment.

51

Measures 51-52 of the musical score. Measure 51 introduces a series of triplets in the treble staff, while the bass staff maintains a simple eighth-note accompaniment. Measure 52 continues the triplet pattern in the treble and adds a descending eighth-note line in the bass.

53

Measures 53-54 of the musical score. Measure 53 continues the triplet pattern in the treble staff. Measure 54 features a more complex treble staff with overlapping triplet patterns and a bass staff with a steady eighth-note accompaniment.

55

Measures 55-56 of the musical score. Measure 55 shows a treble staff with eighth-note chords and a bass staff with a steady eighth-note accompaniment. Measure 56 features a treble staff with a more complex chordal texture and a bass staff with a steady eighth-note accompaniment.

57

Measures 57-58 of the musical score. Measure 57 features a treble staff with eighth-note chords and a bass staff with a steady eighth-note accompaniment. Measure 58 continues this pattern with a slight variation in the treble staff.

59

Measures 59-60. Treble clef, key of D major (F# C# G# D). Measure 59 features a complex texture with multiple beamed eighth notes and chords in the right hand, and a simple bass line in the left hand. Measure 60 continues the right-hand texture with a triplet of eighth notes marked with a '3' above the staff. The bass line remains simple.

61

Measures 61-62. Treble clef, key of D major. Measure 61 shows a more active right hand with eighth notes and chords, while the left hand has a simple bass line. Measure 62 continues the right-hand melody with some chords, and the left hand has a few notes.

63

Measures 63-64. Treble clef, key of D major. Measure 63 features a right hand with chords and eighth notes, and a left hand with a simple bass line. Measure 64 shows a change in the right hand with a different texture, and the left hand continues with a simple bass line.

65

Measures 65-66. Treble clef, key of D major, 4/4 time. Measure 65 features a right hand with a continuous eighth-note pattern and a left hand with a simple bass line. Measure 66 continues the eighth-note pattern in the right hand and the bass line in the left hand.

67

Measures 67-68. Treble clef, key of D major, 4/4 time. Measure 67 features a right hand with a continuous eighth-note pattern and a left hand with a simple bass line. Measure 68 continues the eighth-note pattern in the right hand and the bass line in the left hand.

69

Measures 69-70. Treble clef: Measure 69 has a triad of F#4, A#4, C#5. Measure 70 has a descending eighth-note line: B4, A#4, G#4, F#4. Bass clef: Steady eighth-note accompaniment starting on C3.

71

Measures 71-73. Treble clef: Measure 71 has a triad of F#4, A#4, C#5. Measure 72 has a descending eighth-note line: B4, A#4, G#4, F#4. Measure 73 has a descending eighth-note line: E5, D#5, C#5, B4. Bass clef: Steady eighth-note accompaniment starting on C3.

74

Measures 74-76. Treble clef: Measure 74 has an eighth-note line: F#4, A#4, C#5, B4, A#4, G#4, F#4. Measure 75 has an eighth-note line: E5, D#5, C#5, B4, A#4, G#4, F#4. Measure 76 has an eighth-note line: E5, D#5, C#5, B4, A#4, G#4, F#4. Bass clef: Steady eighth-note accompaniment starting on C3.

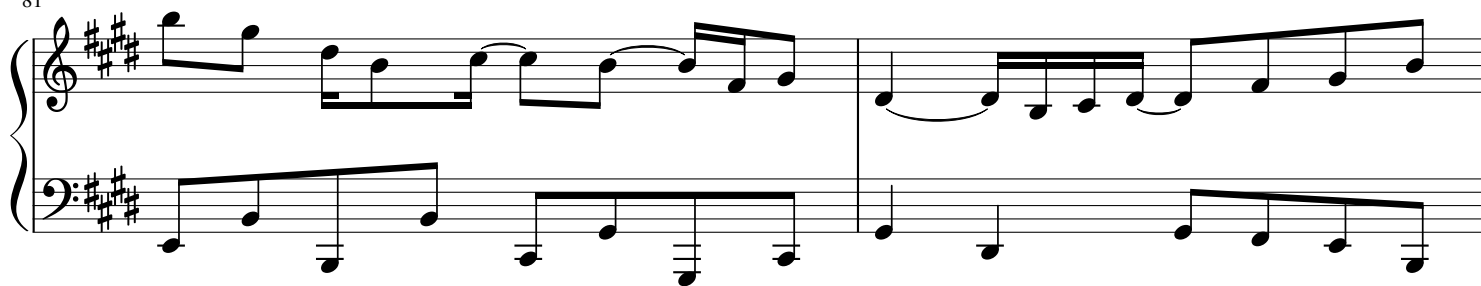
77

Measures 77-78. Treble clef: Measure 77 has an eighth-note line: F#4, A#4, C#5, B4, A#4, G#4, F#4. Measure 78 has an eighth-note line: E5, D#5, C#5, B4, A#4, G#4, F#4. Bass clef: Steady eighth-note accompaniment starting on C3.

79

Measures 79-80. Treble clef: Measure 79 has an eighth-note line: F#4, A#4, C#5, B4, A#4, G#4, F#4. Measure 80 has an eighth-note line: E5, D#5, C#5, B4, A#4, G#4, F#4. Bass clef: Steady eighth-note accompaniment starting on C3.

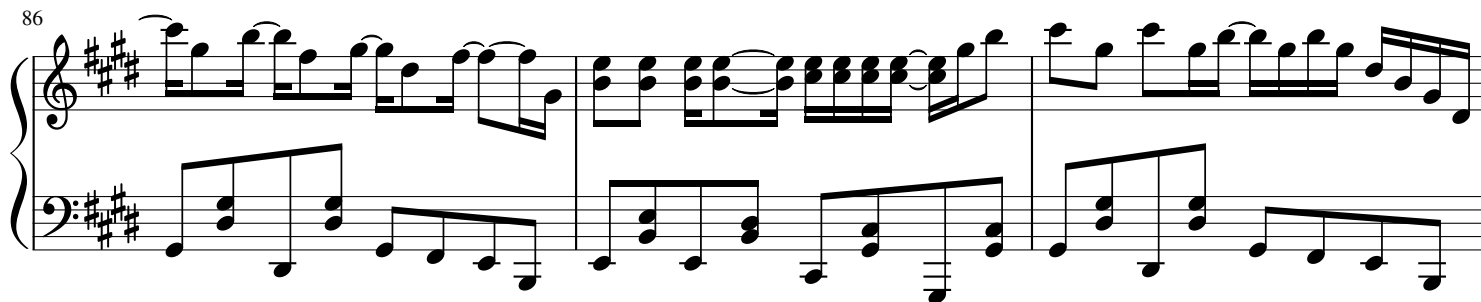
81



83



86



89

