

Let Me Down Slowly

Alec Benjamin ft. Alessia Cara

♩ = 75

mp

Measures 1-4 of the piano introduction. The key signature is three sharps (F#, C#, G#) and the time signature is 4/4. The tempo is marked as quarter note = 75. The music is in a piano (mp) dynamic. The right hand features a melodic line with eighth and sixteenth notes, while the left hand provides a harmonic accompaniment with chords and single notes.

5

Measures 5-8 of the piano introduction. The right hand continues the melodic development with eighth and sixteenth notes, and the left hand maintains the harmonic support with chords and single notes.

9

Measures 9-11 of the piano introduction. The right hand features a melodic line with eighth and sixteenth notes, and the left hand provides a harmonic accompaniment with chords and single notes.

12

Measures 12-14 of the piano introduction. The right hand continues the melodic development with eighth and sixteenth notes, and the left hand maintains the harmonic support with chords and single notes.

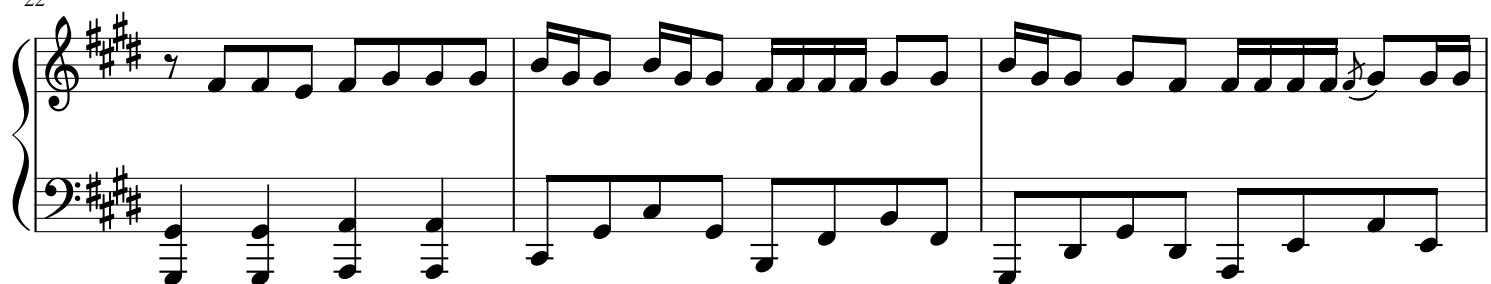
15

Measures 15-17 of the piano introduction. The right hand features a melodic line with eighth and sixteenth notes, and the left hand provides a harmonic accompaniment with chords and single notes.

18



22



25



28



31



34

3

mf

3

37

1.

3

2.

40

mp

43

8

45

p

48

Measures 48 and 49 of a musical score in A major (three sharps). The melody in the treble clef consists of eighth and quarter notes, with a quarter rest in measure 48 and a quarter note in measure 49. The bass line consists of half notes. The piece concludes with a double bar line at the end of measure 49.

Measure 48: Treble clef has a quarter note A4, eighth note G4, quarter note F#4, eighth note E4, quarter note D4, eighth note C#4, quarter note B3, eighth note A3, quarter note G3, eighth note F#3, quarter note E3, eighth note D3, quarter note C3, eighth note B2, quarter note A2. Bass clef has a half note A2.

Measure 49: Treble clef has a quarter note G3, eighth note F#3, quarter note E3, eighth note D3, quarter note C3, eighth note B2, quarter note A2, eighth rest, quarter note G3. Bass clef has a half note G2.