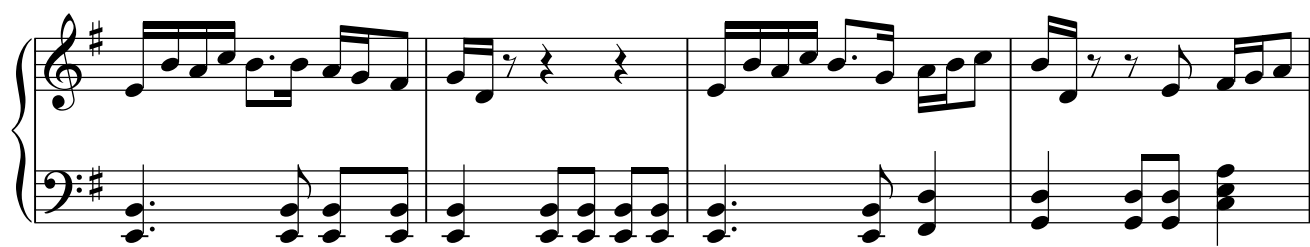
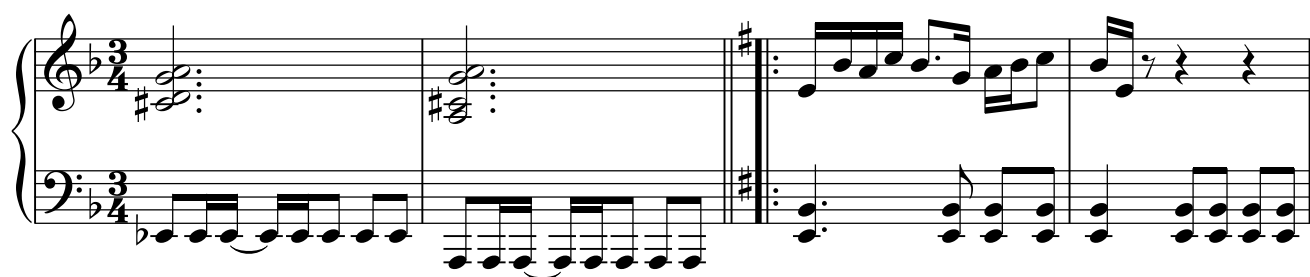
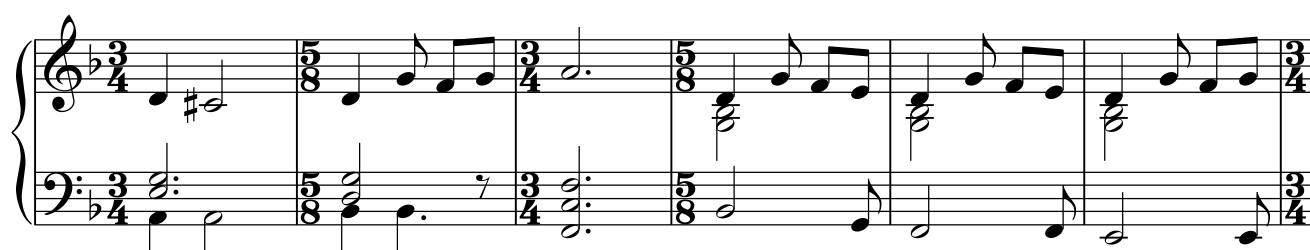


Музыка из т/с "Бригада"

<http://melodyforever.ru>

© Arr.by: Irina Makoeva, 2009.

This piano score is written for a 3/4 time signature with a key signature of one flat (B-flat). It consists of five systems of two staves each. The first system features a treble and bass clef. The second system through the fifth system only use a bass clef. The music is characterized by a steady eighth-note accompaniment in the bass and more complex, often sixteenth-note, patterns in the treble. The piece concludes with a final chord in the bass staff of the fifth system.



1.

The musical score for 'The Rose Tree' is presented in two systems. The first system consists of a treble and bass staff. The treble staff begins with a key signature of one sharp (F#) and a common time signature (C). It features a melody that starts with a whole rest, followed by a series of eighth and sixteenth notes. The bass staff provides a harmonic accompaniment with chords and moving lines. The second system continues the melody in the treble staff, which includes a repeat sign with a first ending bracket and a second ending bracket. The bass staff continues with chords and moving lines. The score is written in a clear, legible font with standard musical notation.

A musical score for the song 'The Rose Tree'. It features a treble and bass staff with a key signature of one sharp (F#) and a 3/4 time signature. The melody is in the treble staff, and the accompaniment is in the bass staff. The score is divided into four measures. The first measure has a whole rest in the treble and a half note G4 in the bass. The second measure has a half note A4 in the treble and a half note F#4 in the bass. The third measure has a half note B4 in the treble and a half note G4 in the bass. The fourth measure has a half note C5 in the treble and a half note A4 in the bass. The score ends with a double bar line.

A musical score for the song 'The Rose Tree'. The score is written for a piano, with a treble clef and a key signature of one sharp (F#). The time signature is 3/4. The melody is in the treble clef, and the accompaniment is in the bass clef. The melody consists of a series of eighth notes, starting on G4 and ending on G4. The accompaniment consists of a series of eighth notes, starting on G3 and ending on G3. The score is divided into three measures, each containing a measure of melody and a measure of accompaniment. The first measure of the melody is G4, A4, B4. The second measure is C5, B4, A4. The third measure is G4, F#4, E4. The first measure of the accompaniment is G3, A3, B3. The second measure is C4, B3, A3. The third measure is G3, F#3, E3.

A musical score for the song 'The Rose Tree'. The score is written for a piano, with a treble and bass staff. The key signature is one sharp (F#), and the time signature is 4/4. The melody is in the treble staff, and the accompaniment is in the bass staff. The melody consists of a series of eighth and sixteenth notes, with a final measure containing a quarter rest. The accompaniment features a steady eighth-note pattern in the left hand, with a final measure containing a quarter rest. The score is presented in a clean, black-and-white format.

A musical score for the song 'The Rose Tree'. The score is written for a piano, with a treble and bass staff. The key signature is one sharp (F#), and the time signature is 4/4. The melody is in the treble staff, and the accompaniment is in the bass staff. The melody consists of a series of eighth and sixteenth notes, with a final measure containing a whole note. The accompaniment consists of a series of eighth and sixteenth notes, with a final measure containing a whole note. The score is written in a standard musical notation style, with a treble and bass staff, a key signature of one sharp, and a time signature of 4/4.