



*Double Stops*

*for Cello*

By Rick Mooney



# Double Stops for Cello

by:

**Rick Mooney**

**PLANDER Instrumentos Musicais**  
**FONE/FAX: (041) 323-3636**  
**CURITIBA - PR**

© 1995 Summy-Birchard Music division of Summy-Birchard Inc.  
exclusively distributed by WARNER BROS. PUBLICATIONS INC. 15800 N.W. 48th Avenue Miami, FL 33014  
All Rights Reserved Printed in USA International Copyright Secured

0-87487-761-X

# Introduction

Double stops are an excellent learning tool. In practicing them, many important skills can be developed:

- Intonation and ear training are enhanced when one pitch must be tuned against another — even if one of the notes is just an open string.
- The correct shape of the left hand and proper spacing of the fingers is developed.
- A good extended hand position is especially crucial when playing double stops.
- Certain important exceptions to a normal hand position are also learned, as with fifths and chords.
- Many passages in the cello repertoire depend upon double stop patterns in the left hand even if the bow is playing one note at a time.

In my opinion, the study of double stops should be an important part of a daily practice routine.

The problem is that most double stop exercises are too advanced for many students. This book specifically addresses that problem. “Double Stops for Cello” consists of familiar and tuneful melodies. Besides making the pieces fun to play, the fact that the songs are so recognizable helps students to know when they are playing in tune. The first folk songs are very simple, being composed of fingered notes against open strings. The book then progresses through closed fingering patterns, extensions, shifting, sixths, thirds, etc. The pieces are placed in order of difficulty except for the bowing studies at the back of the book which should be brought out and used as needed.

I would like to thank my friends and their students for trying out the preliminary versions of this book and giving me their valuable comments. Also, special thanks to Lynn and Haide for their assistance in acquiring source materials.

I hope you find this book as fun and useful as I have. Enjoy!

Rick Mooney

# Contents

Go Tell Aunt Rhody .....	4	Coventry Carol.....	19
Long Long Ago .....	4	Greensleeves.....	19
Three Blind Mice .....	5	The Blue Bells of Scotland .....	20
Twinkle, Twinkle Little Star.....	5	Oh Susannah.....	20
Amazing Grace.....	6	Streets of Laredo .....	21
Lightly Row .....	6	Clementine .....	21
Lullaby .....	7	Endearing Young Charms.....	22
Boil Them Cabbage Down .....	7	America, the Beautiful .....	23
Skip to My Lou.....	8	Sweet Betsy from Pike .....	23
Ten Little Indians.....	8	Aura Lee .....	24
The Mulberry Bush .....	8	Ode to Joy .....	24
This Old Man .....	9	London Bridge is Falling	
Camptown Races .....	9	Down .....	25
Auld Lang Syne .....	10	Soldier's March.....	25
Polly Wolly Doodle.....	10	French Folk Song .....	26
Berceuse .....	11	When the Saints Go	
Mary Had a Little Lamb.....	11	Marching In .....	26
Cockles and Mussels .....	12	Swing Low, Sweet Chariot.....	27
The Volga Boatmen .....	12	My Bonnie.....	27
Sur le Pont d'Avignon .....	13	Get Along Little Doggies.....	28
Home on the Range .....	13	Londonderry Air.....	29
Clair de Lune.....	14	The Old Gray Mare.....	29
When Johnny Comes Marching		The Ash Grove.....	30
Home.....	14	Pop Goes the Weasel.....	30
Drunken Sailor .....	15	The Farmer in the Dell .....	31
Highland Lad.....	15	Chopsticks.....	31
Old MacDonald .....	16	I've Been Working on the	
Happy Birthday To You.....	16	Railroad.....	32
Fuchs, du hast die Gans		Rigadoon.....	33
Gestohlen .....	17	French Folk Song in Sixths .....	34
Blow the Man Down .....	17	Kummer Exercise .....	36
Yankee Doodle .....	18	Lee Exercise .....	37
The Bear Went Over the		Twinkle in B-Flat Major.....	38
Mountain.....	18	Twinkle With Chords.....	39

# Go Tell Aunt Rhody

United States

Bass guitar tablature for the song "Go Tell Aunt Rhody". The music is written in the key of D major (one sharp) and common time (C). The piece consists of three staves of music. The first staff contains measures 1 through 8, the second staff contains measures 5 through 8, and the third staff contains measures 9 through 12. The tablature includes various fret numbers (0, 1, 3, 4) and techniques such as triplets and slurs. The piece concludes with a double bar line at the end of the third staff.

# Long Long Ago

Thomas H. Bayly

Bass guitar tablature for the song "Long Long Ago". The music is written in the key of D major (one sharp) and common time (C). The piece consists of four staves of music. The first staff contains measures 1 through 8, the second staff contains measures 5 through 8, the third staff contains measures 9 through 12, and the fourth staff contains measures 13 through 16. The tablature includes various fret numbers (0, 1, 3, 4) and techniques such as triplets and slurs. The piece concludes with a double bar line at the end of the fourth staff.

# Three Blind Mice

England

0 3 0 1 0 0 0 4 0 3

8 4 0 3 1 0 0 0 0 0 0 0

13

# Twinkle, Twinkle Little Star (Ah! Vous dirai-je Maman)

France

0 0 0 1 3 0 0 1 0 4 0 3 0 1 0

5 0 1 0 4 0 3 0 1

9

# Amazing Grace

United States

5

10

# Lightly Row (Hänschen Klein)

Germany

5

9

13

Note: Also play in the key of G



# Lullaby

Wales

Musical score for 'Lullaby' in bass clef, 3/4 time, key of D major. The score consists of three staves of music. The first staff contains measures 1-4, the second staff contains measures 5-8, and the third staff contains measures 9-12. The music features a mix of eighth and sixteenth notes, often with grace notes or ornaments. Fingerings are indicated by numbers 0-4 above the notes. Measure numbers 1, 5, and 9 are placed at the beginning of their respective staves.

# Boil Them Cabbage Down

United States

Musical score for 'Boil Them Cabbage Down' in bass clef, 2/4 time, key of D major. The score consists of four staves of music. The first staff contains measures 1-4, the second staff contains measures 5-8, the third staff contains measures 9-12, and the fourth staff contains measures 13-16. The music is primarily composed of chords, often with triplets or sixteenth-note patterns. Measure numbers 1, 5, 9, and 13 are placed at the beginning of their respective staves.

# Skip to My Lou

United States

Musical notation for the bass line of "Skip to My Lou". The piece is in the key of D major (one sharp) and common time (C). The notation consists of two staves. The first staff contains the first four measures, and the second staff contains measures 5 through 8. Fingerings are indicated by numbers 1-4 above the notes. The piece concludes with a double bar line and repeat dots.

# Ten Little Indians

United States

Musical notation for the bass line of "Ten Little Indians". The piece is in the key of D major (one sharp) and common time (C). The notation consists of two staves. The first staff contains the first four measures, and the second staff contains measures 5 through 8. Fingerings are indicated by numbers 1-4 above the notes. The piece concludes with a double bar line and repeat dots.

# The Mulberry Bush

England

Musical notation for the bass line of "The Mulberry Bush". The piece is in the key of D major (one sharp) and 6/8 time. The notation consists of two staves. The first staff contains the first four measures, and the second staff contains measures 5 through 8. Fingerings are indicated by numbers 1-4 above the notes. The piece concludes with a double bar line and repeat dots.

# This Old Man

England

Musical score for "This Old Man" in bass clef, 2/4 time, key of D major. The score consists of two staves. The first staff contains measures 1-4, and the second staff contains measures 5-8. Fingerings and accents are indicated throughout.

# Camptown Races

Stephen C. Foster

Musical score for "Camptown Races" in bass clef, 2/4 time, key of D major. The score consists of four staves. The first staff contains measures 1-4, the second staff contains measures 5-8, the third staff contains measures 9-12, and the fourth staff contains measures 13-16. Fingerings, accents, and slurs are indicated throughout.

# Auld Lang Syne

Scotland

Musical score for 'Auld Lang Syne' in bass clef, 4/4 time. The score consists of four staves of music. The first staff begins with a 'V' marking above the first measure. Fingerings are indicated by numbers 0, 1, 2, 4, and 2 above various notes. The second staff starts with a measure number '5' and includes fingerings 2, 2, 0, 2, 2, 1, 4, 2, 2, 1, 0, 2. The third staff starts with a measure number '9' and includes fingerings 4, 1, 2, 2. The fourth staff starts with a measure number '13' and includes fingerings 4, 2, 2, 1, 0, 2. The piece concludes with a double bar line.

# Polly Wolly Doodle

United States

Musical score for 'Polly Wolly Doodle' in bass clef, 4/4 time, with a key signature of one sharp (F#). The score consists of four staves of music. The first staff begins with a 'V' marking above the first measure. Fingerings are indicated by numbers 1, 4, 1, 0, 4, 3, 4, 0, 2, 1, 0, 3, 0. The second staff starts with a measure number '5' and includes fingerings 0, 3, 0, 0, 3, 4, 3, 1, 4, 0, 4, 4, 0, 2, 1, 0, 3, 4, 3, 4, 3, 0, 0. The third staff starts with a measure number '9' and includes fingerings 1, 4, 1, 0, 2, 3, 0, 3, 0. The fourth staff starts with a measure number '13' and includes fingerings 4, 0, 3, 0. The piece concludes with a double bar line.

# Berceuse

Franz Schubert

Basso continuo notation for 'Berceuse' by Franz Schubert, measures 1-17. The piece is in G major and common time. The notation includes fingerings (1-4) and fret numbers (0-4) for the left hand. Measure numbers 1, 5, 9, 13, and 17 are indicated at the start of their respective staves. The piece concludes with a double bar line and repeat dots.

# Mary had a Little Lamb

Sara J. Hale

Basso continuo notation for 'Mary had a Little Lamb' by Sara J. Hale, measures 1-5. The piece is in G major and common time. The notation includes fingerings (1-4) and fret numbers (0-4) for the left hand. Measure numbers 1 and 5 are indicated at the start of their respective staves. The piece concludes with a double bar line and repeat dots.

# Cockles and Mussels

Ireland

1 4 0 4 0 4 0 1 0 2 0 3

5 1 0 4 2 1 4 2 3 0 1 4 2 3 0 0 1 4 2 3

10 0 2 0 0 1 4 2 3 0 0 1 4 2 3 0 0 1 4 2 3

15 0 4 0 4 0 4 0 4 0 4 0 4 0 4 0 4 0 4 0 4 0 4

20 0 2 0 4 0 2 0 4 0 2 0 4 0 2 0 4 0 2 0 4 0 2

# The Volga Boatmen

Russia

2 0 4 0 2 1 2 1 0 x1 0 x1 4 2

# Sur le Pont d'Avignon

France

Musical notation for the first piece, 'Sur le Pont d'Avignon', in bass clef, 2/4 time. The notation includes guitar chords and fret numbers. The first line starts with a 2/4 time signature and a key signature of one flat. The second line begins with a measure number '5'. The piece concludes with a double bar line and repeat dots.

# Home on the Range

United States

Musical notation for the second piece, 'Home on the Range', in bass clef, 3/4 time. The notation includes guitar chords and fret numbers. The first line starts with a 3/4 time signature and a key signature of one sharp. The second line begins with a measure number '5'. The piece concludes with a double bar line and repeat dots.

# Clair de Lune

France

Musical score for "Clair de Lune" in bass clef, 6/8 time. The score consists of four staves of music. The first staff includes guitar techniques:  $x1$  0,  $x1$  2,  $2$   $x1$ , and  $4$   $2$ . The second staff is marked with a '5'. The third staff includes techniques:  $2$   $x1$ ,  $2$  0,  $2$  2,  $4$ ,  $4$ ,  $2$   $x1$ ,  $x1$  0, 0 2,  $4$  2, and 2. The fourth staff is marked with a '13'. The piece concludes with a double bar line.

# When Johnny Comes Marching Home

Patrick S. Gilmore  
(Louis Lambert)

Musical score for "When Johnny Comes Marching Home" in bass clef, 6/8 time. The score consists of four staves of music. The first staff includes guitar techniques:  $v$ ,  $4$  0, 0 0,  $x1$  4, and  $2$   $2$ . The second staff is marked with a '4' and includes techniques:  $2$   $x1$  and  $4$  0. The third staff is marked with an '8' and includes techniques:  $4$  4,  $2$  2, and 1. The fourth staff is marked with a '12' and includes techniques: 0 0,  $4$  0,  $2$   $x1$ ,  $x1$  4, 0 3,  $4$  2, and 2 1. The piece concludes with a double bar line.



# Drunken Sailor

Sea Shanty

Musical notation for 'Drunken Sailor' in bass clef, key of D major (one sharp), and 2/4 time. The piece consists of two staves. The first staff begins with a measure marked '1' above the first note. The second staff begins with a measure marked '5' above the first note. The notation includes various fingerings and a final double bar line with repeat dots.

# Highland Lad

Scotland

Musical notation for 'Highland Lad' in bass clef, key of D major (one sharp), and common time (C). The piece consists of four staves. The first staff begins with a measure marked 'V' above the first note. The second staff begins with a measure marked '5' above the first note. The third staff begins with a measure marked '9' above the first note. The fourth staff begins with a measure marked '13' above the first note. The notation includes various fingerings, a 'V' symbol, and a 'x2' symbol.

# Old MacDonald

United States

Bass clef musical notation for 'Old MacDonald' in G major and common time. The piece consists of four lines of music. The first line starts with a 'V' (pickup) and includes fret numbers: 4 0, 4 3, 4 1, 0 0, 1 4, 0 3, 1 4, 1 0, 0 3, 0 0, 4 3, and a final 'V'. The second line is marked with a '5' at the beginning. The third line is marked with a '9' and includes fret numbers: 2 1, 0, 2 2, 2 1, 2 2, 4 3, and 4 1. The fourth line is marked with a '13' at the beginning and ends with a double bar line.

# Happy Birthday To You

Mildred and Patty Hill

Bass clef musical notation for 'Happy Birthday To You' in G major and 3/4 time. The piece consists of two lines of music. The first line starts with a 'V' (pickup) and includes fret numbers: 0 0, 1 0, 4 3, 3 1, 0 4, 1 0, 4 2, 2 1, and 0 0. The second line is marked with a '5' at the beginning and includes fret numbers: 4 0, 1 4, 4 3, 3 4, 1 4, 2 1, 1 0, 4 3, 4 2, and 2 1. The piece ends with a double bar line.

Used by Permission. Summy-Birchard, Inc.

# Fuchs, du hast die Gans Gestohlen (Song of the Wind)

Germany

Musical score for 'Fuchs, du hast die Gans Gestohlen' (Song of the Wind) in bass clef, 2/4 time, key of D major. The score consists of three staves. The first staff contains measures 1-4, the second staff contains measures 5-8, and the third staff contains measures 9-12. Fingerings are indicated by numbers 0-4 above notes. Measure 12 ends with a repeat sign.

# Blow the Man Down

Sea Chanty

Musical score for 'Blow the Man Down' in bass clef, 3/4 time, key of D major. The score consists of four staves. The first staff contains measures 1-4, the second staff contains measures 5-8, the third staff contains measures 9-12, and the fourth staff contains measures 13-16. 'V' marks indicate breath marks. Fingerings are indicated by numbers 0-4 above notes. Measure 16 ends with a repeat sign.

# Yankee Doodle

United States

4 3 0 0 1 4 3 1

5 2 1 1 0 4 2 2 1 3 1 0 3 1 4

9 V V 3 1

13 4 1 2 0 1 4 4 2 2 1

# The Bear Went Over the Mountain

England

V 0 1 4 3 3 1 2 0 1 4 3 1 1 1 4 0 1

5 1 4 3 4 0 1 4 0 3 4 1 3

10 3 1 2 0 1 4 0 1 1 4 3 2 0 3

16 1 4 1 1 4 3 4 0

# Coventry Carol

England

Musical score for Coventry Carol in bass clef, 3/4 time. The score consists of three staves. The first staff contains measures 1 through 5. The second staff contains measures 6 through 10, with a repeat sign at the end of measure 8. The third staff contains measures 11 through 15. Fret numbers are indicated above the notes: 4 0, 4 2, 3 1, 1 0, 4 0, 3 1, 1 4, 1 4, 2, 0 3, x1 0, 2 x1, 1, 2, 4, 2 2, x1 2, 0 2, 4 0. Measure numbers 6, 11, and 1 are placed at the beginning of their respective staves.

# Greensleeves

England

Musical score for Greensleeves in bass clef, 6/8 time. The score consists of four staves. The first staff contains measures 1 through 4. The second staff contains measures 5 through 8. The third staff contains measures 9 through 12. The fourth staff contains measures 13 through 16. Fret numbers are indicated above the notes: x1 4, 1, 2 2, 1 1, 0 0, V, 1, 2, 3 1, 2 2, 2 1, 1 1, 4 2, 0 0 1, 4 0, 2 2, 2 1, 1 1, 3 1, V. Measure numbers 5, 9, and 13 are placed at the beginning of their respective staves. The instruction *poco rit.* is written below the final measure of the fourth staff.

# The Blue Bells of Scotland

Scotland

1  
5  
9  
13

# Oh Susannah

Stephen C. Foster

5  
9  
13

# Streets of Laredo (The Cowboy's Lament)

United States

Bass guitar sheet music for "Streets of Laredo" in 3/4 time, key of D major. The piece consists of four lines of music. The first line starts with a V (vibrato) over a dotted quarter note on D4, followed by a quarter note on E4, a quarter note on F#4, and a quarter note on G4. The second line begins with a measure rest, then a quarter note on G4, a quarter note on F#4, a quarter note on E4, and a quarter note on D4. The third line starts with a quarter note on D4, a quarter note on E4, a quarter note on F#4, and a quarter note on G4. The fourth line begins with a quarter note on G4, a quarter note on F#4, a quarter note on E4, and a quarter note on D4. Fingering numbers (0-4) and techniques like vibrato (V) and bends (x1) are indicated throughout the score.

# Clementine

United States

Bass guitar sheet music for "Clementine" in 3/4 time, key of D major. The piece consists of two lines of music. The first line starts with a V (vibrato) over a dotted quarter note on D4, followed by a quarter note on E4, a quarter note on F#4, and a quarter note on G4. The second line begins with a measure rest, then a quarter note on G4, a quarter note on F#4, a quarter note on E4, and a quarter note on D4. Fingering numbers (0-4) and techniques like vibrato (V) and bends (x1, x4) are indicated throughout the score.

# Believe Me, If All Those Endearing Young Charms

Ireland

0 1 1 V 0 1 1 0 1 1 x4 x1 4 3

5 0 3 3 x1 4 0 2 1 4 3

9 0 2 4 3 2 2 3 3

13 0 3 4 0 3 1 1 1 0 x2 x1 4 0

17 0 3 3 1 0 0 4 3 2 1 4 4 0

21 3 x1 4 1 4 3

25 0 2 4 3 2 3

29 0 x2



# America, the Beautiful

Samuel A. Ward

Musical score for "America, the Beautiful" in bass clef, common time. The score consists of four staves. The first staff starts with a 'V' above the first measure. Fingerings are indicated by numbers 1-4. Bar lines are numbered 1, 5, 9, and 13. The piece ends with a double bar line and repeat dots.

# Sweet Betsy from Pike

United States

Musical score for "Sweet Betsy from Pike" in bass clef, 3/4 time. The score consists of four staves. The first staff starts with a 'V' above the first measure. Fingerings are indicated by numbers 1-4. Bar lines are numbered 1, 5, 9, and 13. The piece ends with a double bar line and repeat dots.

# Aura Lee

United States

Bass guitar sheet music for 'Aura Lee' in C major, 4/4 time. The piece consists of 14 measures. The notation includes various chords and melodic lines with fingerings and techniques such as bends and slides. Measure numbers 4, 5, 9, and 13 are indicated at the start of their respective lines.

# Ode to Joy

Ludwig van Beethoven

Bass guitar sheet music for 'Ode to Joy' in D major, 4/4 time. The piece consists of 11 measures. The notation features a mix of chords and melodic lines with fingerings and techniques like bends and slides. Measure numbers 6 and 11 are indicated at the start of their respective lines.

# London Bridge is Falling Down

England

Musical notation for the first system of 'London Bridge is Falling Down'. It consists of two staves of music in bass clef, 4/4 time. The first staff contains measures 1 through 4, and the second staff contains measures 5 through 8. Fingerings are indicated above the notes: 0/3, 1/4, 2/3, 1/4, x1/4, 0/3, 1/1, 3/1, 2/3, 1/4, 4/1, 0/0. A repeat sign is at the end of the second staff.

# Soldier's March

Robert Schumann

Musical notation for the first system of 'Soldier's March'. It consists of six staves of music in bass clef, 2/4 time. The first staff contains measures 1 through 4, the second staff measures 5 through 8, the third staff measures 9 through 12, the fourth staff measures 13 through 16, the fifth staff measures 17 through 20, and the sixth staff measures 21 through 24. Fingerings are indicated above the notes: V, 0/3, 1/4, 2/3, 1/4, 1/1, 0, 2/3, 1/4, 1/1, 1/4, 0/3, x1/4, 1/4, x1/4, 1/4, 3, 2/3, 1, x1/4, 1/4. A repeat sign is at the end of the sixth staff.

# French Folk Song

France

7

14

# When the Saints Go Marching In

United States

5

9

12

14

# Swing Low, Sweet Chariot

United States

5

9

13

Fine

V

Note: Try swinging the eighth notes

*D. C. al Fine*

# My Bonnie

H. J. Fuller

9

17

25

V

# Get Along Little Doggies

United States

1 0 1 2 3 4 4

4 1 4 V V V V V 0 3 V

7 V V 1 V 2 4 V

9 3 1 2 1 4 3

12 1 V V 3 1 1 V 3 V

15 V V 1 1 4 V 3 V

18 V V 4 4 1 4 V V

21 1 0 V V V V

# Londonderry Air (Danny Boy)

Ireland

Musical score for the bass line of "Londonderry Air (Danny Boy)". The piece is in C major, 3/4 time, and consists of 15 measures. The notation includes fingerings (0-4), a vibrato mark (V), and a repeat sign at the end. Measure numbers 5, 9, and 13 are indicated at the start of their respective lines.

# The Old Gray Mare

United States

Musical score for the bass line of "The Old Gray Mare". The piece is in C major, 3/4 time, and consists of 13 measures. The notation includes fingerings (0-4), vibrato marks (V), and a repeat sign at the end. Measure numbers 4, 9, and 13 are indicated at the start of their respective lines.

# The Ash Grove

Wales

Musical score for "The Ash Grove" in bass clef, 3/4 time, key of D major. The score consists of five staves of music. The first staff begins with a repeat sign and includes a vibrato marking 'V'. Fingering numbers are placed above the notes. The second staff starts at measure 5. The third staff starts at measure 9. The fourth staff starts at measure 14. The fifth staff starts at measure 20. The piece concludes with a double bar line.

# Pop Goes the Weasel

England

Musical score for "Pop Goes the Weasel" in bass clef, 6/8 time, key of D major. The score consists of three staves of music. The first staff begins with a vibrato marking 'V'. Fingering numbers are placed above the notes. The second staff starts at measure 5. The third staff starts at measure 11. The piece concludes with a double bar line.



# The Farmer in the Dell

England

Musical notation for 'The Farmer in the Dell' in bass clef, key of D major (two sharps), and 4/4 time. The piece consists of two staves of music. The first staff begins with a 'V' marking and contains measures 1 through 5. The second staff begins with a measure number '6' and contains measures 6 through 10. Fingerings are indicated by numbers 0-4 above notes. Bar lines are marked with 'x2' and 'x1' above them. A 'II' marking is present at the end of the first staff. The piece concludes with a double bar line and repeat dots.

# Chopsticks

Unknown

Musical notation for 'Chopsticks' in bass clef, key of D major (two sharps), and 3/4 time. The piece consists of six staves of music. The first staff contains measures 1 through 6. The second staff begins with a measure number '7' and contains measures 7 through 14. The third staff begins with a measure number '15' and contains measures 15 through 24. The fourth staff begins with a measure number '25' and contains measures 25 through 34. The fifth staff begins with a measure number '35' and contains measures 35 through 41. The sixth staff begins with a measure number '42' and contains measures 42 through 48. Fingerings are indicated by numbers 0-4 above notes. Bar lines are marked with 'x1' and 'x4' above them. The piece concludes with a double bar line and repeat dots.

# I've Been Working on the Railroad

United States

This sheet music is for the bass guitar part of the song "I've Been Working on the Railroad". It is written in the key of D major (one sharp) and common time (C). The piece consists of 40 measures, divided into eight systems of five measures each. The notation includes various fret numbers (0-4), string numbers (1-4), and articulation marks such as accents and vibrato (V). The music features a mix of eighth and sixteenth notes, often beamed together, and includes several double bass chords. The piece concludes with a final double bass chord in the 40th measure.

# Rigadoon

Henry Purcell

1 0 4 0  
4 2 3 1 0 3 1 0

5 x1 1 3  
4 1 1

9 4 2 0 x1 1 0  
0 4 4 3 2 0 1 4 1 0 1 4

13 4 0 1 1 2 1  
0 1 4 4 2 1 1

17 0 1 x1 1 4 1 x1 1 4  
3 4 4 1 4 4 4 4

21 1 4 x1 4 2 2 x1 4 4 1 1 2  
4 4 4 4 4 4 4 2 1

25 4 0 1 0  
0 4 4 3 4 3

29 x1 3  
4 1 1 0  
4 3 4 3

# French Folk Song in Sixths

4 3 3 1 3 1 3 1 3 1 4 3 1 0 4 3 3 1

7

3 1 1 0 1 0 3 1 3 1 4 3 3 1 3 1 4 3

14

1 0 4 3 3 1 3 1 1 0 4 3 3 1 3 1 1 0

4 3 3 1 3 1 3 1 4 3 2 1 4 3 3 1

7

4 2 2 1 2 1 4 2 4 2 3 1 4 3 3 1 3 1 4 3

14

2 1 4 3 3 1 4 2 2 1 4 3 3 1 4 2 2 1

Musical notation system 1: Bass clef, 3/4 time signature, key signature of one flat. Measures 1-6. Fingerings: 3 2, 3 1, 3 1, 3 1, 3 2, 2 1, 2 1, 3 1.

Musical notation system 2: Bass clef, 3/4 time signature, key signature of one flat. Measures 7-13. Fingerings: 3 1, 1 0, 1 0, 3 1, 3 1, 4 3, 3 1, 3 1, 4 3.

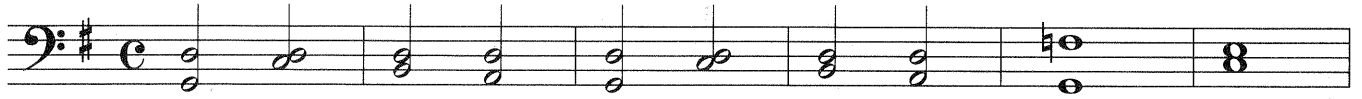
Musical notation system 3: Bass clef, 3/4 time signature, key signature of one flat. Measures 14-20. Fingerings: 3 1, 3 1, 3 2, 3 2, 3 2, 3 1, 3 1, 1 0, 3 2, 3 1, 4 2, 2 1, 4 3, 3 1, 3 1, 1 0.

Musical notation system 4: Treble clef, 3/4 time signature, key signature of two sharps. Measures 1-6. Fingerings: 3 2, 3 1, 3 1, 3 1, 3 2, 3 2, 3 2, 3 1.

Musical notation system 5: Treble clef, 3/4 time signature, key signature of two sharps. Measures 7-13. Fingerings: 3 1, 2 1, 2 1, 4 2, 4 2, 3 1, 4 3, 3 1, 3 1, 4 3, 4 2.

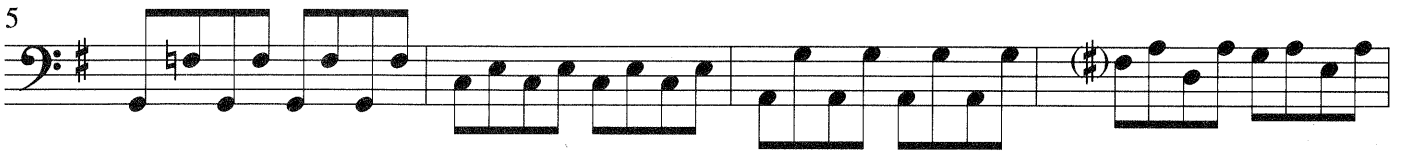
Musical notation system 6: Treble clef, 3/4 time signature, key signature of two sharps. Measures 14-20. Fingerings: 3 2, 3 2, 3 2, 3 1, 3 1, 3 2, 3 2, 3 1, 3 1, 2 1, 4 2, 4 3, 4 2.

# Preparation for Kummer Exercise



## Kummer Exercise

Friedrich A. Kummer



# Preparation for Lee Exercise

Musical notation for the 'Preparation for Lee Exercise' section, consisting of three staves of bass clef music in common time. The first staff contains measures 1 through 6. The second staff, starting with a measure number '7' above the first measure, contains measures 7 through 13. The third staff, starting with a measure number '14' above the first measure, contains measures 14 through 18, ending with a double bar line and repeat sign.

# Lee Exercise

Sebastian Lee

Musical notation for the 'Lee Exercise' section, consisting of six staves of bass clef music in common time. The first staff contains measures 1 through 3. The second staff, starting with a measure number '4' above the first measure, contains measures 4 through 6. The third staff, starting with a measure number '7' above the first measure, contains measures 7 through 9. The fourth staff, starting with a measure number '10' above the first measure, contains measures 10 through 12. The fifth staff, starting with a measure number '13' above the first measure, contains measures 13 through 15. The sixth staff, starting with a measure number '16' above the first measure, contains measures 16 through 18, ending with a double bar line and repeat sign.

# Twinkle in B-Flat Major

1 0 2 2 4 2 4 3 3 1 3 1 1 0

5 2 2 4 3 3 1 1 1

9

Detailed description: This block contains the main melody of the piece, written in bass clef with a key signature of one flat (B-flat major) and a common time signature. The melody is presented in three systems. The first system includes fingerings: 1 0, 2 2, 4 2, 4 3, 3 1, 3 1, 1 0. The second system starts with a measure number '5' and includes fingerings: 2 2, 4 3, 3 1, 1 1. The third system starts with a measure number '9'. The piece concludes with a double bar line.

## Bowing Variations:

1 2 3

4 5 6

7 8 9

10 11 12

Detailed description: This section provides twelve numbered bowing variations for the melody. Each variation is shown on a single staff in bass clef with a key signature of one flat. The variations are: 1. A simple quarter-note pattern with a 'v' (vibrato) mark. 2. A similar pattern with a 'v' mark. 3. A pattern with two 'v' marks. 4. A pattern with a 'v' mark. 5. A pattern with a 'v' mark. 6. A pattern with a 'v' mark. 7. A pattern with a 'v' mark. 8. A pattern with a 'v' mark. 9. A pattern with a 'v' mark. 10. A pattern with a 'v' mark. 11. A pattern with a 'v' mark. 12. A pattern with a 'v' mark. Each variation is separated by a double bar line.



# Twinkle with Chords

0 1 1  
2 2 1  
4 2 2  
2 3 1  
3 1 1  
2 2 1  
0 1 1

5

9

## Bowing Variations:

1<sub>v</sub> 2 3<sub>v</sub> 4<sub>v</sub>

5 6<sub>v</sub> 7<sub>v</sub>

8 9

10 11<sub>v</sub>

# Alphabetical Index

Amazing Grace .....	6	Lightly Row.....	6
America, the Beautiful .....	23	London Bridge is Falling Down .....	25
Ash Grove, The .....	30	Londonderry Air.....	29
Auld Lang Syne .....	10	Long Long Ago.....	4
Aura Lee .....	24	Lullaby .....	7
Bear Went Over the Mountain, The.....	18	Mary Had a Little Lamb .....	11
Berceuse .....	11	Mulberry Bush, The .....	8
Blow the Man Down .....	17	My Bonnie.....	27
Blue Bells of Scotland, The .....	20	Ode to Joy .....	24
Boil Them Cabbage Down .....	7	Oh Susannah.....	20
Camptown Races .....	9	Old Gray Mare, The.....	29
Chopsticks .....	31	Old MacDonald.....	16
Clair de Lune.....	14	Polly Wolly Doodle .....	10
Clementine.....	21	Pop Goes the Weasel.....	30
Cockles and Mussels .....	12	Rigadoon.....	33
Coventry Carol .....	19	Skip to My Lou .....	8
Drunken Sailor .....	15	Soldier's March.....	25
Endearing Young Charms .....	22	Streets of Laredo .....	21
Farmer in the Dell, The .....	31	Sur le Pont d'Avignon.....	13
French Folk Song.....	26	Sweet Betsy from Pike .....	23
French Folk Song in Sixths.....	34	Swing Low, Sweet Chariot .....	27
Fuchs, du hast die Gans Gestohlen .....	17	Ten Little Indians .....	8
Get Along Little Doggies .....	28	This Old Man.....	9
Go Tell Aunt Rhody .....	4	Three Blind Mice .....	5
Greensleeves .....	19	Twinkle, Twinkle Little Star .....	5
Happy Birthday To You.....	16	Twinkle in B-Flat Major.....	38
Highland Lad.....	15	Twinkle With Chords.....	39
Home on the Range .....	13	Volga Boatmen, The .....	12
I've Been Working on the Railroad .....	32	When Johnny Comes Marching Home .....	14
Kummer Exercise.....	36	When the Saints Go Marching In .....	26
Lee Exercise .....	37	Yankee Doodle.....	18



SUMMY-BIRCHARD INC.

Printed in USA



SUMMY-BIRCHARD INC.  
Distributed by  
**WARNER BROS. PUBLICATIONS**  
15800 N.W. 48th Avenue • Miami, Florida 33014  
A Warner Music Group Company



**\$7.95**  
in USA

0761